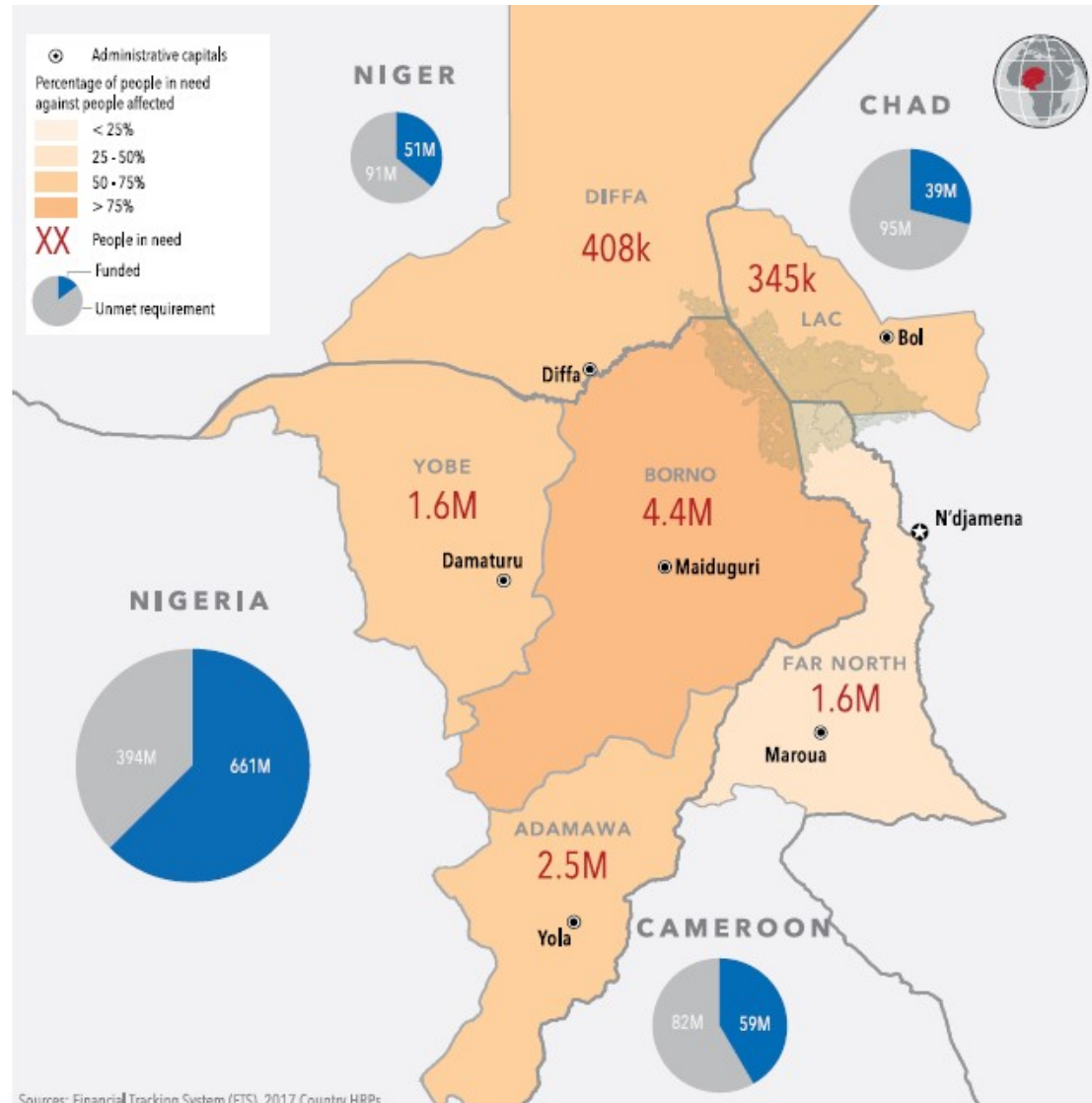


Lake Chad Basin





Monitoring and Reporting Mechanism (MRM) on Grave Violations Nigeria - 2017

Table on Persons affected (including children) by Landmine/IED/PBIE as of December, 2017													
Type of Incidents	Incidents	Killed						Injured					
		Boys	Girls	unknown child	Male	Female	Unknown adult	Boys	Girls	unknown child	Male	Female	Unknown adult
PBIE	77	208	288	70	127	50	164	117	35	4	172	57	323
Landmine/UXO	14	2	-	2	10	-	5	-	-	15	6	-	5
IED	13	-	8	37	4	-	11	-	-	7	10	-	-
	104	210	296	109	141	50	180	117	35	26	188	57	328

Summary			
	Killed	Injured	Total Casualties
Children	615	178	793
Adults	371	573	944
Persons	986	751	1,737



Security incidents overview by year

Trend analysis according to season



The overall number of attacks increased by 16.8% in 2017, compared to the previous year.

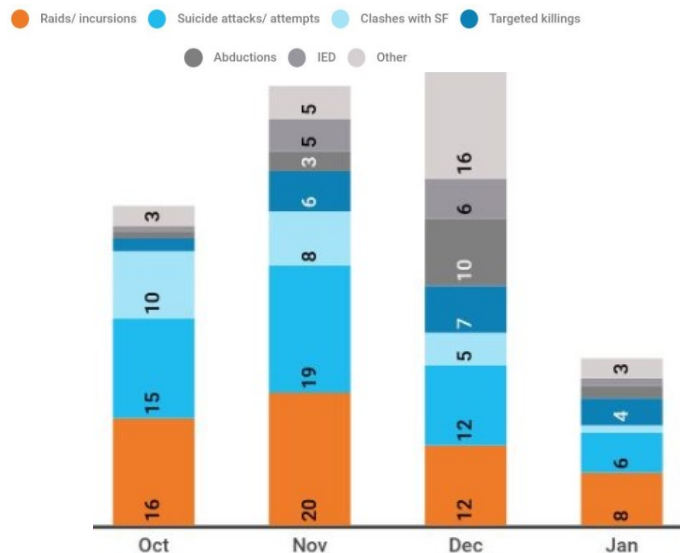
Source: UN-DSS, UN-DPA, UNDP, OCHA, IOM, UNOCC, ACLED



Types of attacks

October 2017 – 15 January 2018

Types of attacks



Attacks on security forces



Photos of attack on Kanama army barracks by Boko Haram on 30 Dec 2017

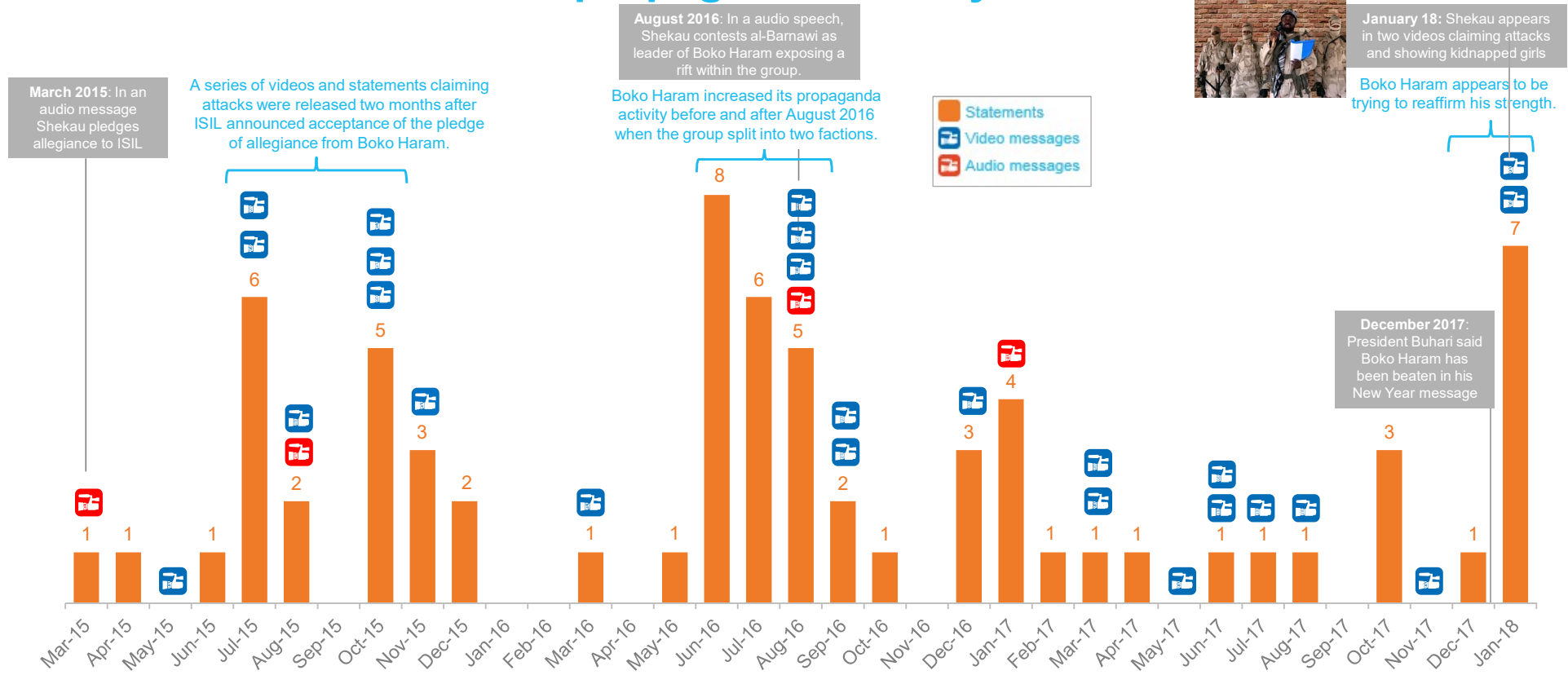


The most common type of attacks conducted by Boko Haram continue to be raids and suicide bombings. Attacks on security forces continue and are often claimed publicly to demonstrate strength.

Source: SITE International Intelligence Group, UN-DSS, UNOCC, ACLED



Overview of Boko Haram propagand activity since March 2015



Source: SITE Intelligence Group, ISS review of Boko Haram's public messages (March 2017), Open Sources