



GICHD Update

**Mine Action Support Group
New York – 5 September 2012**

Ted Paterson, Head: Strategic Management



The GICHD

- > Independent, impartial and neutral expert organisation founded in April 1998
- > Deals with all aspects of landmines, cluster munitions and explosive remnants of war
- > Financed by voluntary contributions and through commissioned work (governments, international organisations, NGOs)



The GICHD

> Centre of expertise

- Total: 42 posts (including 25 in Programmes)
- Implementation Support Unit APMBC: 5
- Support : 5
(Conferences, publications, communication and sponsorship programmes)

> Council of Foundation

- 22 States (9 mine and ERW-affected countries)
- European Union & UNMAS

> Advisory Board

- 20 members
- National Authorities, UN, ICRC, ISU APMBC, OAS, Operators, Research



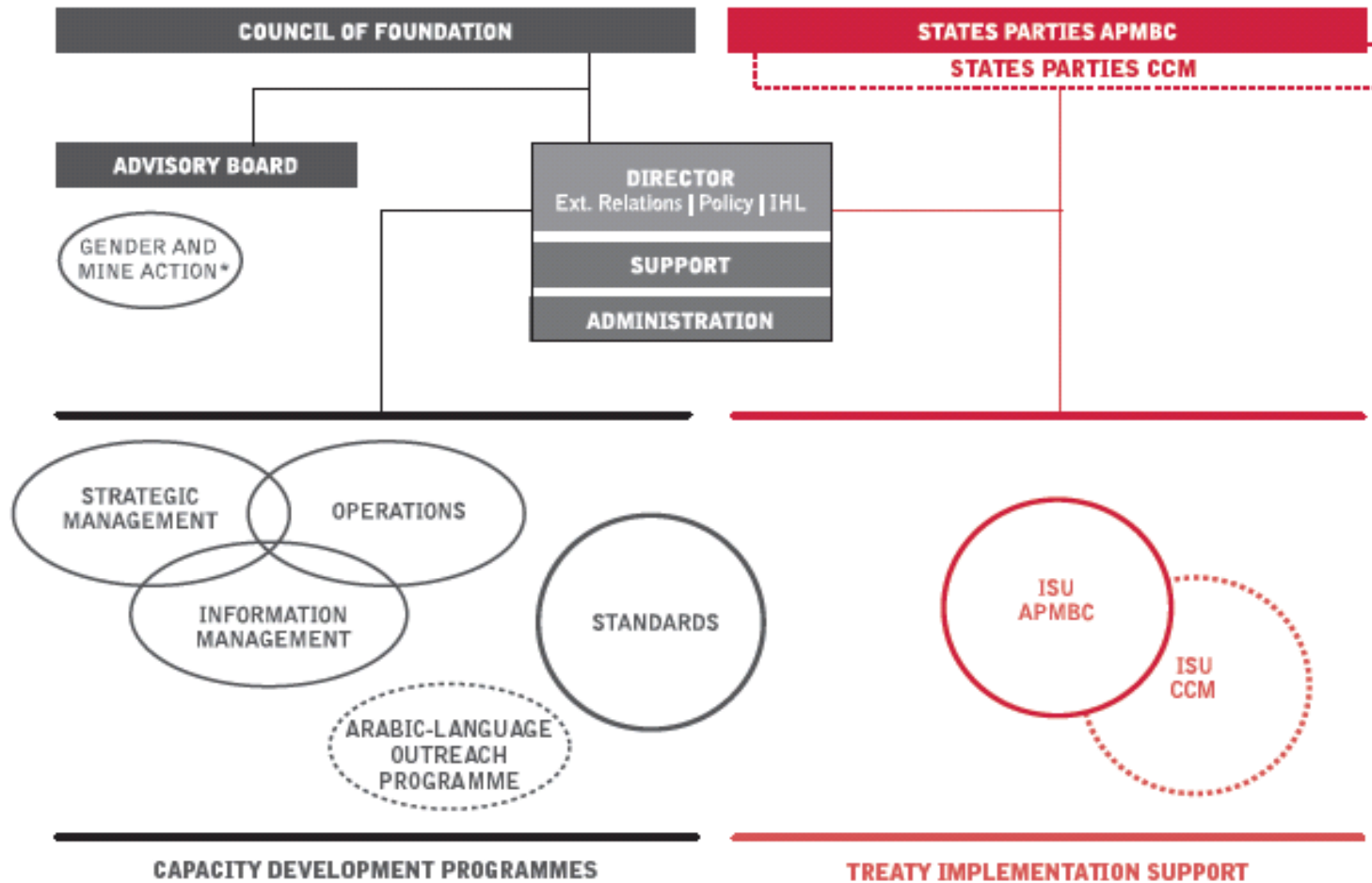


> Key Roles Played by the GICHD

- > **Host the secretariat for the Anti-Personnel Mine Ban Convention**
 - > Will host a similar secretariat for the Convention of Cluster Munitions
- > **Hosts many of the key international meetings for the mine action field**
- > **Maintains the International Mine Action Standards on behalf of the UN**
- > **Designs, distributes & supports the Information Management System for Mine Action**
- > **Conducts research and provides training & advisory services for Operations, Strategic Management, & Quality Management**



GICHD Governance and Organisation



* Independent programme hosted by GICHD



GICHD Strategy: 2012-2014 and some key initiatives

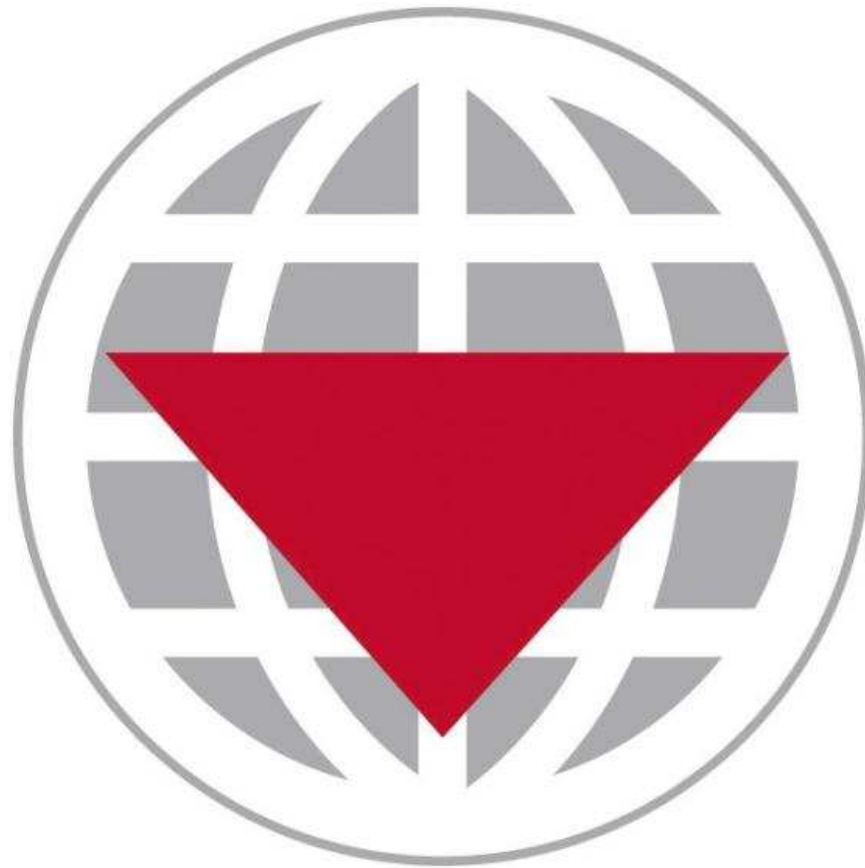
Two strategic objectives

1. Global clarity on explosive hazards

- > **Land Release** – more efficient survey and clearance operations
- > **Decision Support** – evidence-based decisions at strategic, operations, and task levels
- > **Understanding Impacts** – e.g. Accident & Victim Information System (AVIS); Landmines & Livelihoods; Landmines & Land Rights

2. High-performing national authorities and national ownership

- > **Training** – e.g. Contracting & Liability; Quality Management; Evaluating Mine Action
- > **Advisory services** – e.g. Efficiency assessments of survey & clearance; setting-up national programmes; national mine action standards; Technology
- > **Research & evaluation** – e.g. Transition to National Ownership; Prioritisation tools; Strategic Planning for Mine Action; Detector trials for UXO



www.gichd.org